

## Designed to support low-pressure riser top hole drilling activities



### PRODUCT APPLICATIONS

- Top hole drilling
- Low-pressure riser and divertor system drilling
- Bespoke designs and applications available upon request

The Aquaterra Energy Low-Pressure Overshot has been designed to support low-pressure riser top hole drilling activities.

The Overshot provides a safe and effective method of fluid and pressure containment on any API cut casing or conductor profile and a means of connection to the drilling unit's divertor system or riser. The overshoot can be deployed both at surface or subsea, having a manual drive bolt or alternative hydraulic seal activation.

### KEY PRODUCT FEATURES

- Low profile and light weight design
- A-LP Dual HNBR Elastomeric Seals
- Supports all conductor and casing ODs
- Fast make-up with seal indicator and offline, between seal, pressure test function
- Simplistic robust design
- Field serviceable parts and seal replacement

### Get in touch:



+44 (0) 844 811 2065  
contact@aquaterraenergy.com  
www.aquaterraenergy.com



# LOW-PRESSURE OVERSHOT

Primary Design Code:	API RP 64 – Recommended Practice for Diverter Systems Equipment and Operations DNVGL-OS-E101 Latest Edition Offshore Standard For Drilling Plant DNVGL Design verification DVR
Service / H2S	NACE MR0175 compliant region 3
Temperature Rating	-18° C to +121° C
Working Pressure	500 psi
Test Pressure	750 psi (1.5 x WP)
Coating	Cosmetic paint system to OD, phosphate coating on ID
Casing / Conductor OD	Systems to suit a range of casing and conductor ODs up to 36"
Low-Pressure Riser Interface	Upper Overshot interface available with API weld neck profile, flanged or OEM connection
Overshot Swallow	Between 1 and 2 feet
Estimated Number of Makes & Breaks	>500
Seals	A-LP Dual HNBR Elastomeric Seals (2 x independent seals)
Rated for H2S sour service	>500
Sealing on API 5L casing. c/w Independent Pressure Test Port between dual seals.	Cold weld repair seal face, regional service centres available
Indicator	Seal activation indicator on OD
Test port	Pressure test port between dual seals to confirm pressure tight connection upon make up
Activation Method	Manual: 5 to 10 minutes utilising a low torque hand wrench Optional: Hydraulic activation can be added if required reducing make up time to less than 5 minutes, ideal for subsea operations. For a surface application AE advise that this is likely an unnecessary addition for the intended application. Optional: slip type releasable locking mechanism for heavy duty applications
Overshot Drift	API drift to suit casing / conductor ID (flush ID profile)
Fluid through the overshot	Water, Water Based Mud, Brine, H2S, CO2, and Oil Based Mud.
Alignment Offset	2°
Bending moment restrictor	Encapsulated restrictor
Safety Features	Seal energised indicator Between seal pressure test function to confirm seal before LP riser is filled with fluid Integral and encapsulated mechanism and bolting

## Get in touch:

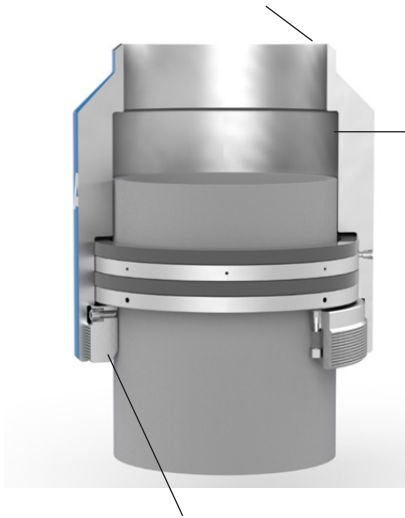
+44 (0) 844 811 2065  
 contact@aquaterraenergy.com  
 www.aquaterraenergy.com



# LOW-PRESSURE OVERSHOT

Butt weld prep to suit API conductor or casing sizes and grades. Flanged or OEM connections also available

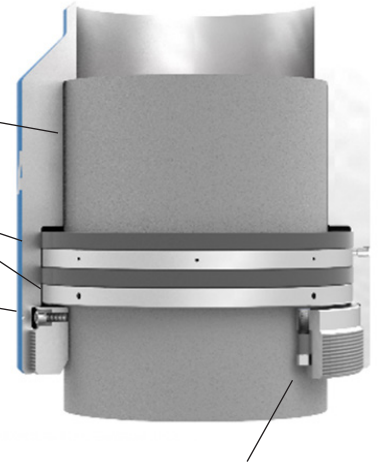
Robust low-profile design



Large Swallow Tolerance to Aid Space Out

A-LP Dual HNBR Elastomeric Seals

Bending moment restraint bolts



Dual seal activation drive bolts

Field serviceable: removable threaded lower retaining ring. Once unthreaded dual seals can be removed, replaced or serviced

Dual between seal pressure test port

Bending moment restraint bolts



Seal Indicator: Sealed / Unsealed

Flush dual seal activation drive bolts

## RELATED PRODUCTS

- LP surface riser
- PROten HOT Conductor Cement Hang Off Tool
- SUREcut conductor cold cutters
- HP surface risers and crossovers
- AQC BOP quick connectors
- SUREgrip Conductor / Riser Tension Rings
- Riser Analysis
- Riser/Conductor Maintenance and Fatigue Management
- Well Start
- Well abandonment engineering and services
- Conductor cement top up
- Conductor platform guide centralisers
- Cellar deck centralisers
- Tension Rings and Tension Systems

### Get in touch:



+44 (0) 844 811 2065



contact@aquaterraenergy.com



www.aquaterraenergy.com

